

MINDRAY



Adding a New Dimension to DC-3 Color Doppler Diagnostic Ultrasound System

To further extend the diagnostic capability, DC-3 is now integrating full functionality for real-time 3D imaging based on Mindray's revolutionary technology. Offering you the greatest flexibility to fully view, and better analyze the ROI with enhanced diagnostic accuracy.

The simplified workflow makes it possible to quickly capture volume data with excellent 3D image quality. The 4D mode acquires detailed 3D images, adding the dimension of time to the static 3D mode to achieve more productivity of virtually any practice.

The simultaneous display of coronal, sagittal, and transverse planes together with a composite 3D rendering image enables you to easily navigate through any dimension, providing a comprehensive overview with more diagnostic confidence.

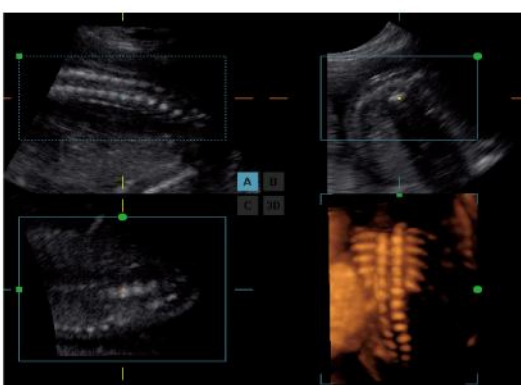
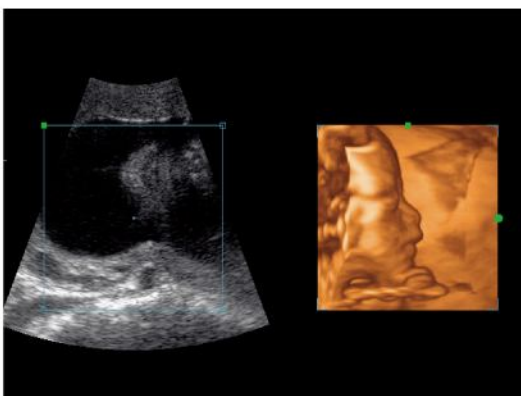
More advanced functions including:

- Real-time zooming capability to clearly reveal more details
- Complete rendering modes, including Surface, Max, Min, and X-ray, help you better observe different structures, such as bones, vessels, and tumors
- Fast switch between single, double, and multi-window review, providing full viewing flexibility
- High quality 3D probe realizes precise automatic scanning to construct 3D volume data with superb accuracy
- Various post-processing functions for increased efficiency and productivity



DC-3

Color Doppler Ultrasonic Diagnostic System



MINDRAY™

Mindray Building, Keji 12th Road South, High-tech Industrial Park,
Nanshan, Shenzhen 518057, P. R. China
Tel: +86 755 2658 2888 2658 2492 Fax: +86 755 2658 2680
E-mail: intl-market@mindray.com Website: www.mindray.com



DISTRIBUTOR: